

- EXISTING CONCRETE WALL
EXISTING METAL STUD WALL
NEW CONCRETE WALL PER SHEET A61.1
NEW METAL STUD WALL PER SHEET A61.1
1-HR RATED WALL
2-HR RATED WALL
WALL TYPE ANNOTATIONS, SEE SHEET A61.1 FOR DETAILS
NUMBER INDICATES DOOR PER SCHEDULE, REFER TO SHEET A52.1
NUMBER INDICATED WINDOW PER SCHEDULE, REFER TO SHEET A53.1
F.E.
FIRE EXTINGUISHER CABINET PER DET. XXXX

FLOOR PLAN GENERAL NOTES:
1. ALL DIMENSIONS ARE TO CENTERLINE OF THE GRID LINES AND/OR TO THE FACE OF STUDS, U.N.O.
2. UNLESS NOTED OTHERWISE, ALL WALLS ARE FULL HEIGHT.
3. REFER TO SHEET GEN-4 FOR TYPICAL ACCESSIBILITY REQUIREMENTS AND DIMENSIONS.
4. REFER TO ENLARGED PLANS FOR DIMENSIONS AND CALLOUTS NOT SHOWN HERE.

FIRST FLOOR PLAN 1/8" = 1'-0" 1

FLOOR PLAN LEGEND

OWNER: SOUTH PASADENA UNIFIED
SCHOOL DISTRICT
PROJECT NAME: SOUTH PASADENA MATH
(ADDITION)

CLIENT ADDRESS: 1401 Fremont Avenue, South Pasadena, CA 91030

IDENTIFICATION STAMP
DIVISION OF THE STATE ARCHITECT
OFFICE OF REGULATION SERVICES

A#
AC FLS SS
DATE

| REVISIONS: | | |
|------------|-------------|------|
| | DESCRIPTION | DATE |
| 1 | | |
| 2 | | |
| 3 | | |
| 4 | | |
| 5 | | |
| 6 | | |
| 7 | | |
| 8 | | |
| 9 | | |
| 10 | | |

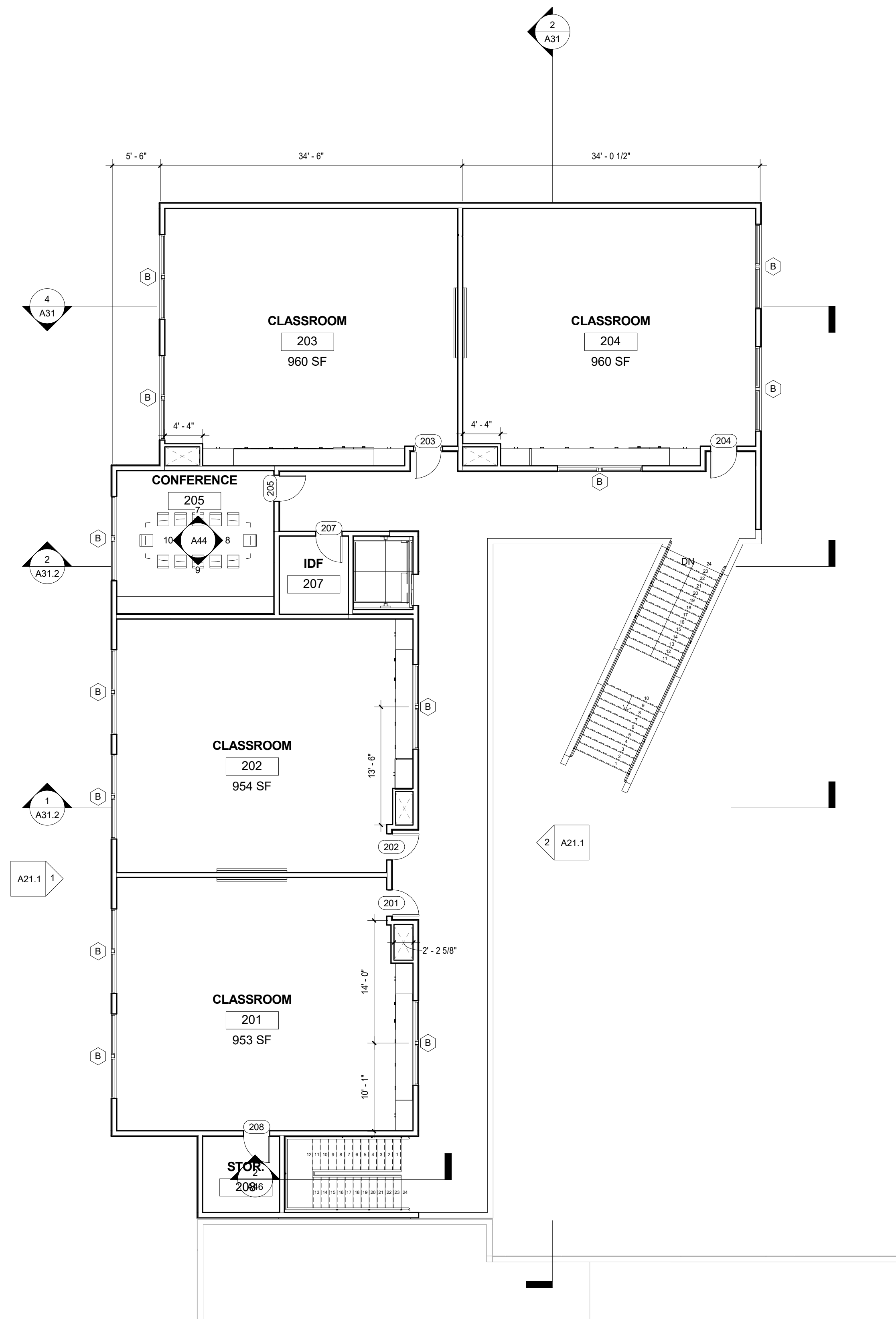
DATE ISSUED: 12/05/2016
PROJECT NO: 2016-40143
SCALE: As indicated

SHEET NUMBER: A11.1
SHEET TITLE:

FIRST FLOOR
PLAN



THIS DOCUMENT CONTAINS INFORMATION PROPRIETARY TO SVA ARCHITECTS INC. AND IS FURNISHED IN CONFIDENCE FOR THE LIMITED PURPOSE OF EVALUATION, BIDDING OR REVIEW. THIS DOCUMENT OR ITS CONTENTS MAY NOT BE USED FOR ANY OTHER PURPOSE AND MAY NOT BE REPRODUCED OR DISCLOSED TO OTHERS WITHOUT THE WRITTEN CONSENT OF SVA ARCHITECTS INC. ALL RIGHTS RESERVED. © COPYRIGHT 2016.



- EXISTING CONCRETE WALL
EXISTING METAL STUD WALL
NEW CONCRETE WALL PER SHEET A61.1
NEW METAL STUD WALL PER SHEET A61.1
1-HR RATED WALL
2-HR RATED WALL
WALL TYPE ANNOTATIONS, SEE SHEET A61.1 FOR DETAILS
NUMBER INDICATES DOOR PER SCHEDULE, REFER TO SHEET A62.1
NUMBER INDICATED WINDOW PER SCHEDULE, REFER TO SHEET A63.1
F.E.
FIRE EXTINGUISHER CABINET PER DET. XXXX

FLOOR PLAN GENERAL NOTES:
1. ALL DIMENSIONS ARE TO CENTERLINE OF THE GRID LINES AND/OR TO THE FACE OF STUDS, U.N.O.
2. UNLESS NOTED OTHERWISE, ALL WALLS ARE FULL HEIGHT.
3. REFER TO SHEET GEN-4 FOR TYPICAL ACCESSIBILITY REQUIREMENTS AND DIMENSIONS.
4. REFER TO ENLARGED PLANS FOR DIMENSIONS AND CALLOUTS NOT SHOWN HERE.

OWNER: SOUTH PASADENA UNIFIED
SCHOOL DISTRICT
PROJECT NAME: SOUTH PASADENA MATH
(ADDITION)

CLIENT ADDRESS: 1401 Fremont Avenue, South Pasadena, CA 91030

IDENTIFICATION STAMP
DIVISION OF THE STATE ARCHITECT
OFFICE OF REGULATION SERVICES

A#
AC _____ FLS _____ SS _____
DATE _____

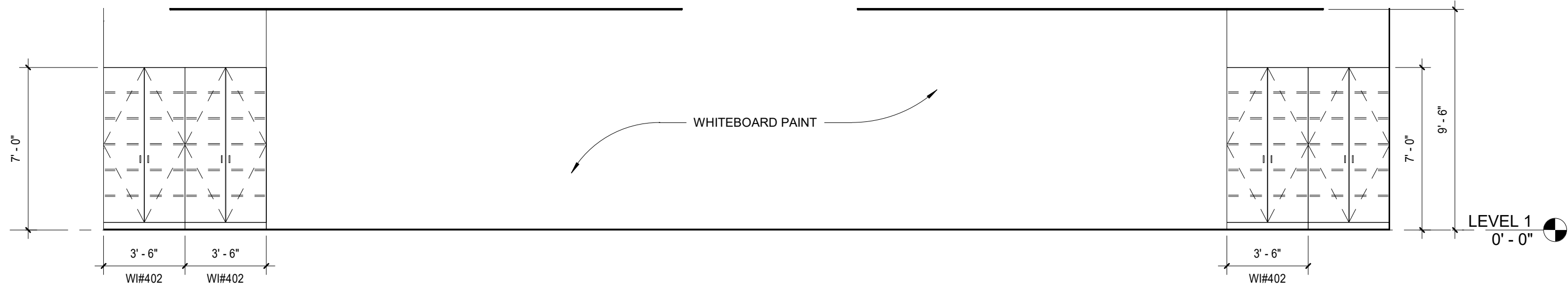
| REVISIONS: | | |
|------------|-------------|------|
| | DESCRIPTION | DATE |
| 1 | | |
| 2 | | |
| 3 | | |
| 4 | | |
| 5 | | |
| 6 | | |
| 7 | | |
| 8 | | |
| 9 | | |
| 10 | | |

DATE ISSUED: 12/05/2016
PROJECT NO: 2016-40143
SCALE: As indicated

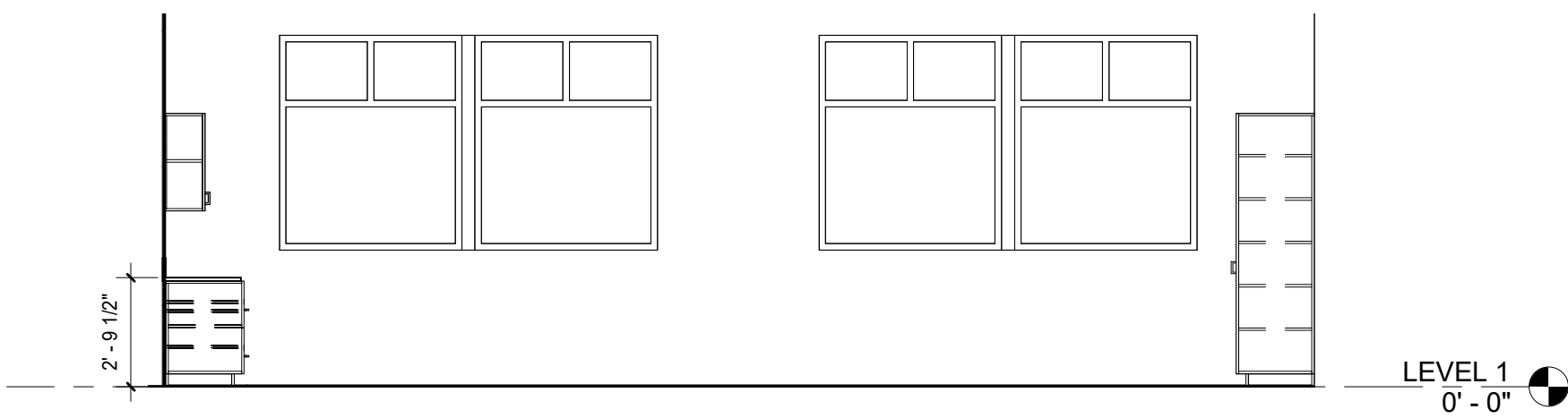
SHEET NUMBER: **A11.2**
SHEET TITLE:

**SECOND FLOOR
PLAN**

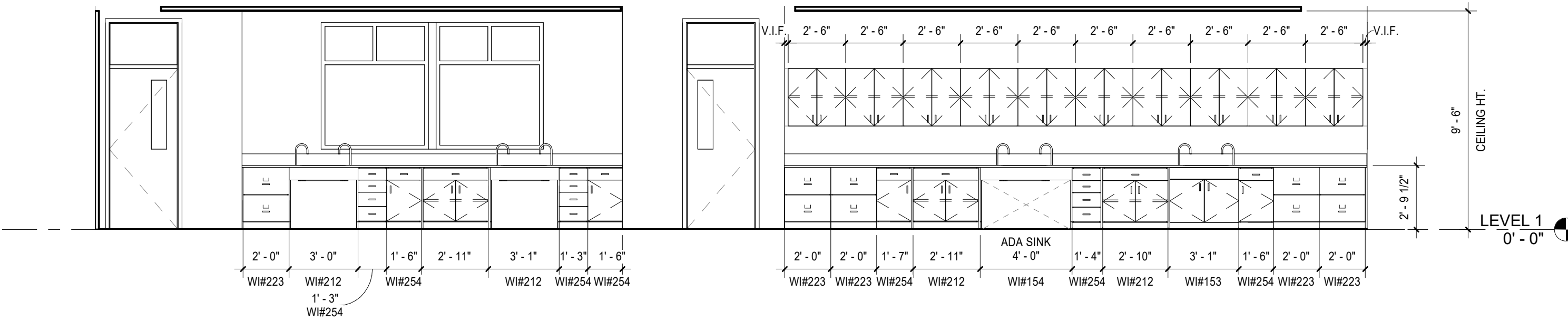
SVA
ARCHITECTS
3 MACARTHUR PLACE, SUITE 650 SANTA ANA, CA 92705
949.438.3380 WWW.SVA-ARCHITECTS.COM
THIS DOCUMENT CONTAINS INFORMATION PROPRIETARY TO SVA ARCHITECTS INC. AND IS FURNISHED IN CONFIDENCE FOR THE LIMITED PURPOSE OF EVALUATION, BIDDING OR REVIEW. THIS DOCUMENT OR ITS CONTENTS MAY NOT BE USED FOR ANY OTHER PURPOSE AND MAY NOT BE REPRODUCED OR DISCLOSED TO OTHERS WITHOUT THE WRITTEN CONSENT OF SVA ARCHITECTS INC. ALL RIGHTS RESERVED. © COPYRIGHT 2016.



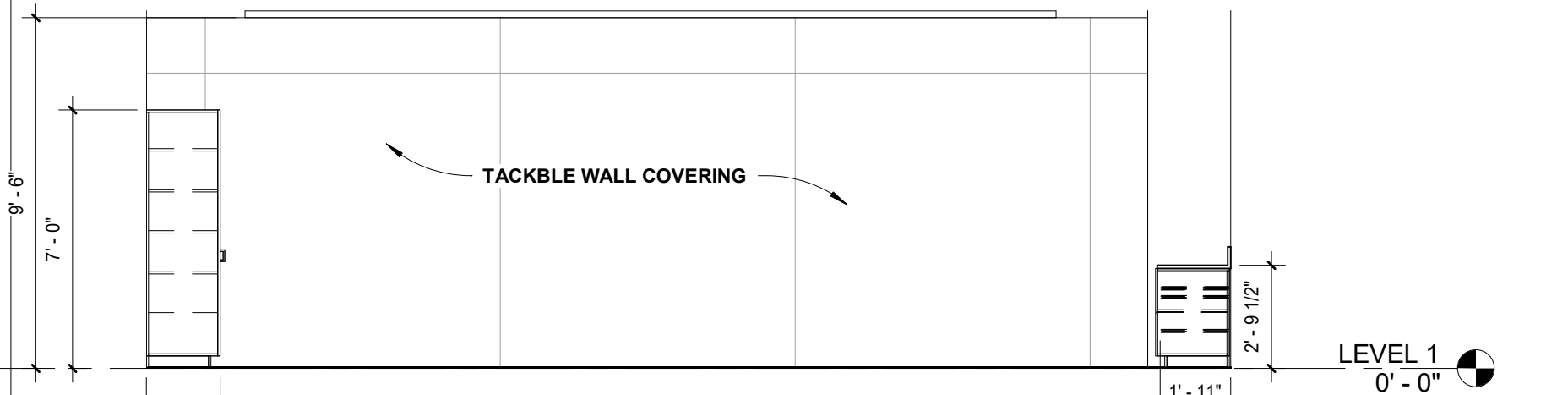
Elevation 2 - a 1/4" = 1'-0" 5



Elevation 1 - d 1/4" = 1'-0" 4



Elevation 1 - c 1/4" = 1'-0" 3

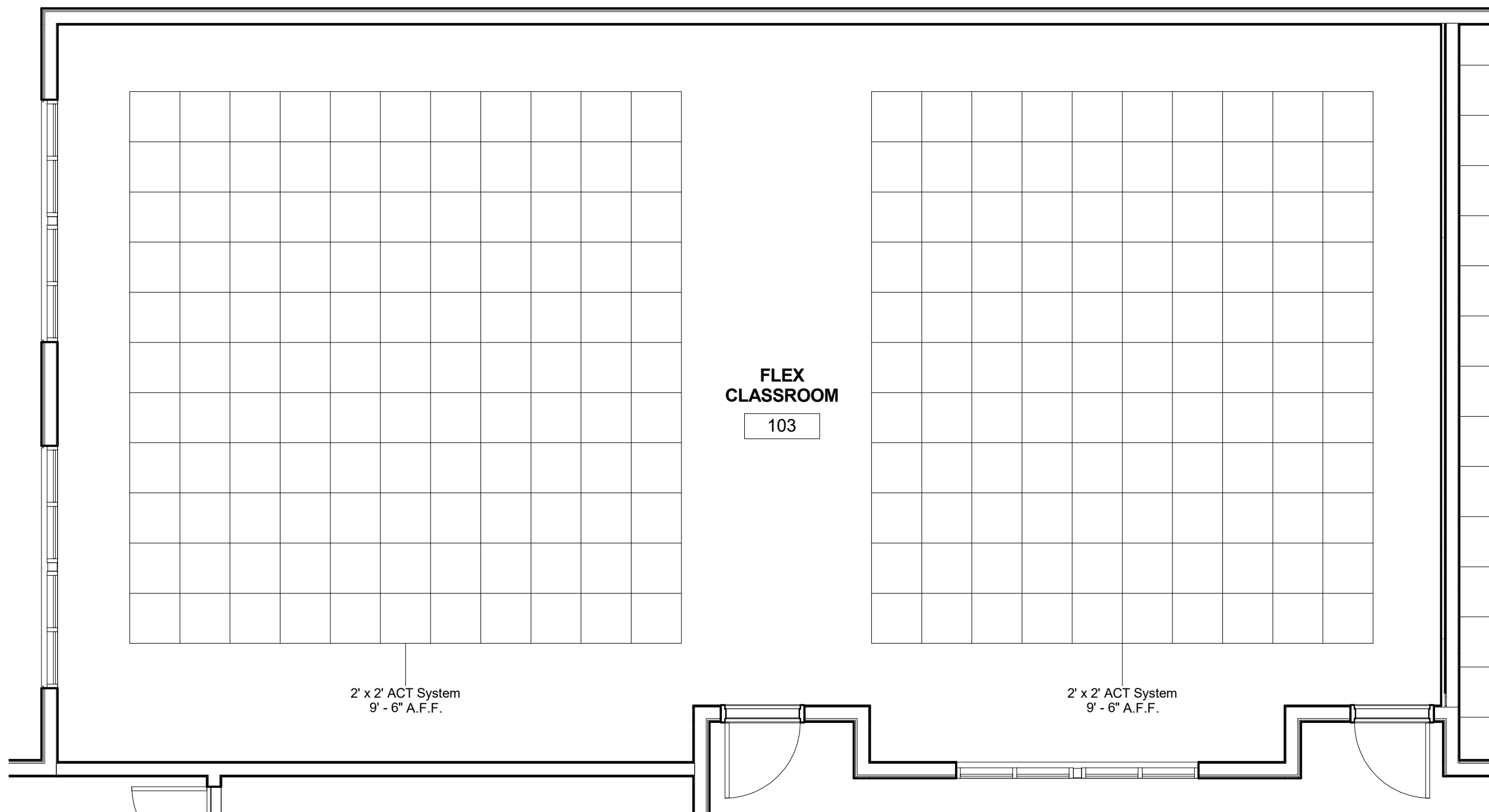


Elevation 1 - b 1/4" = 1'-0" 2

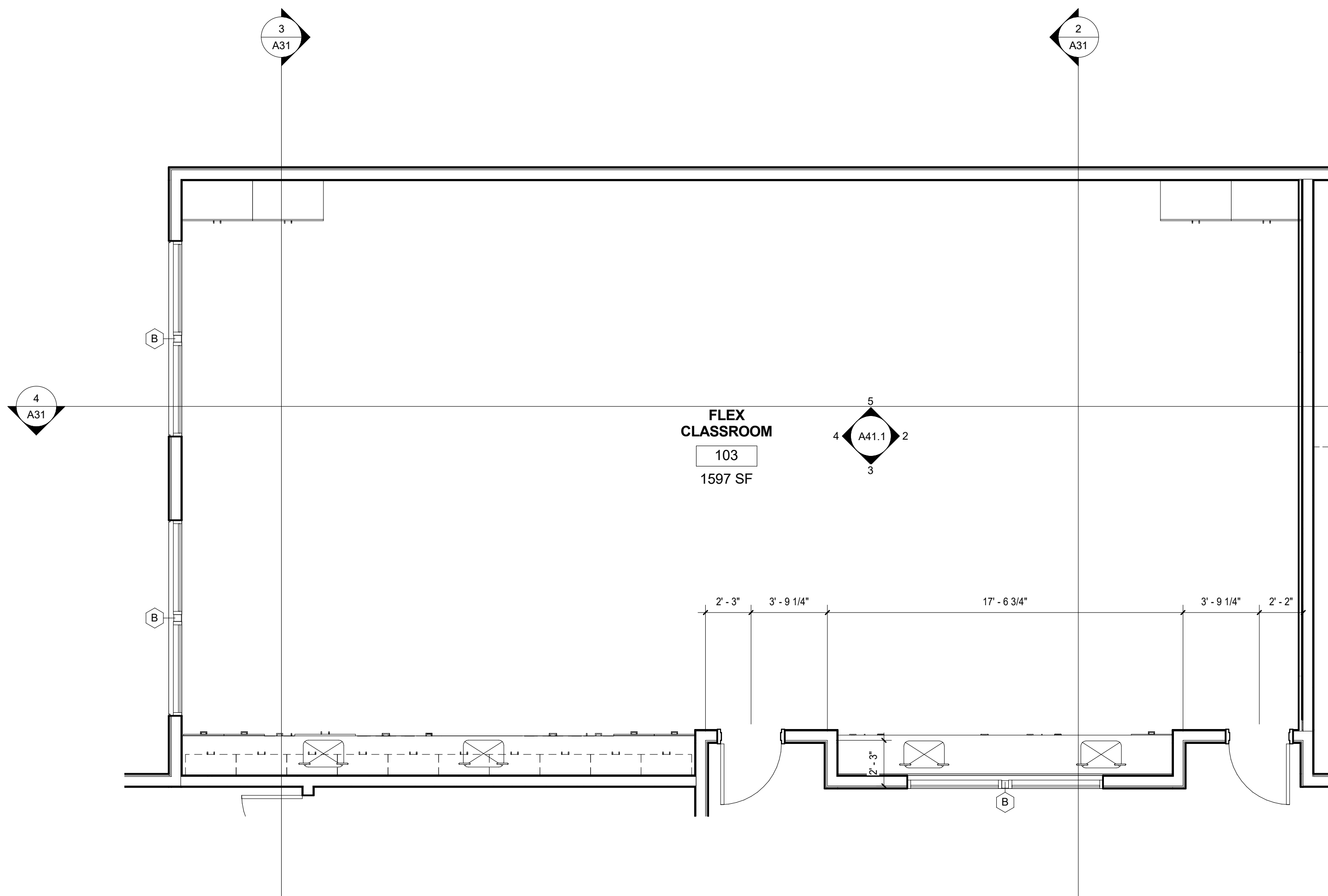
- RECESSED SUPPLY AIR GRILL, SEE MECH. DRAWINGS
- RECESSED RETURN AIR GRILL, SEE MECH. DRAWINGS
- RECESSED EXHAUST AIR GRILL, SEE MECH. DRAWINGS
- 2X2 LUMINAIRE, SEE ELEC. DRAWINGS*
- 2X4 LUMINAIRE, SEE ELEC. DRAWINGS*
- DECORATIVE PENDANT MOUNTED FIXTURE, SEE ELEC. DRAWINGS*
- RECESSED COMPACT FLUORESCENT DOWNLIGHT, SEE ELEC. DRAWINGS*
- WALL MOUNTED FLUORESCENT DOWNLIGHT, SEE ELEC. DRAWINGS* WALL MOUNTED TO BE 8'-0" TYP.
- WALL MOUNTED FIXTURE AT STAIR, SEE ELEC. DRAWINGS*
- WALL MOUNTED FLUORESCENT LIGHT FIXTURE, SEE ELEC. DRAWINGS*
- SURFACE MOUNTED FLUORESCENT FIXTURE, SEE ELEC. DRAWINGS*
- SUSPENDED FLUORESCENT FIXTURE, SEE ELEC. DRAWINGS*
- SUSPENDED STRIP FLUORESCENT, SEE ELEC. DRAWINGS*
- EXIT SIGNAGE, SEE ELECTRICAL DRAWINGS
- SPEAKERS, SEE ELECTRICAL DRAWINGS
- ROOF HATCH ABOVE, REFER TO DET. 8/A62.6
- GYP. BOARD CEILING, REFER TO NOTE 1
- EXTERIOR PLASTER SOFFIT, REFER TO NOTE 3
- 2' X 4' SUSPENDED CEILING TILES, REFER TO NOTE 2
- 2' X 2' SUSPENDED CEILING TILES, REFER TO NOTE 2

NOTES:
1. GYPSUM BOARD CEILINGS SHALL BE FRAMED WITH METAL STUD JOISTS, U.N.O. SEE DETAIL XXXX FOR MORE INFORMATION.
2. FOR SUSPENDED ACOUSTICAL CEILING, REFER TO SHEET A64.1.
3. FOR PLASTER SOFFIT DETAILS, SEE DETAIL XXXX.
4. AT ALL ROOMS WITHOUT CEILINGS (LABELLED AS "EXP" ON PLAN AND/OR ON THE FINISH SCHEDULE), ALL EXPOSED SURFACES AND ELEMENTS SHALL BE PAINTED, INCLUDING STRUCTURE, DECK ABOVE, AND ALL UTILITIES INCLUDING PIPING, CONDUITS, DUCTWORK, ETC.
5. PLUMBING, ELECTRICAL, MECHANICAL AND FIRE PROTECTION COMPONENTS ARE SHOWN FOR REFERENCE AND COORDINATION PURPOSES. REFER TO PLUMBING, ELECTRICAL, MECHANICAL AND FIRE PROTECTION DRAWINGS FOR COMPONENT AND SYSTEM QUANTITIES, TYPES AND REQUIREMENTS.
6. CENTER LIGHTING FIXTURES BETWEEN OPPOSITE WALLS, U.N.O.
7. ALL DIMENSIONS, NOTES, KEYNOTES AND DETAILS CALLOUTS ARE TYPICAL, U.N.O.
8. SEE SHEET A60.1 FOR INTERIOR FINISH LEGEND.
9. AT EXPOSED CEILINGS, ALL DUCTS, PIPES AND CONDUITS SHALL RUN PARALLEL OR PERPENDICULAR TO WALL, AND AS CLOSE TO THE DECK ABOVE AS POSSIBLE. PROVIDE ESCUTCHEONS FOR CONDUITS/PIPES AT WALLS WHERE EXPOSED.
* REFER TO ELECTRICAL DRAWINGS FOR LOCATIONS OF EMERGENCY LIGHTING.

RCP LEGEND



ENLARGED RCP- 1/4"=1'-0"- FLEX CLASSROOM 1/4" = 1'-0" 6



ENLARGED PLAN- 1/4"=1'-0"- FLEX 1/4" = 1'-0" 1

OWNER: SOUTH PASADENA UNIFIED
SCHOOL DISTRICT
PROJECT NAME: SOUTH PASADENA MATH
(ADDITION)
CLIENT ADDRESS: 1401 Fremont Avenue, South Pasadena, CA 91030

IDENTIFICATION STAMP
DIVISION OF THE STATE ARCHITECT
OFFICE OF REGULATION SERVICES

A#
AC FLS SS
DATE

| REVISIONS: | | |
|------------|-------------|------|
| | DESCRIPTION | DATE |
| 1 | | |
| 2 | | |
| 3 | | |
| 4 | | |
| 5 | | |
| 6 | | |
| 7 | | |
| 8 | | |
| 9 | | |
| 10 | | |

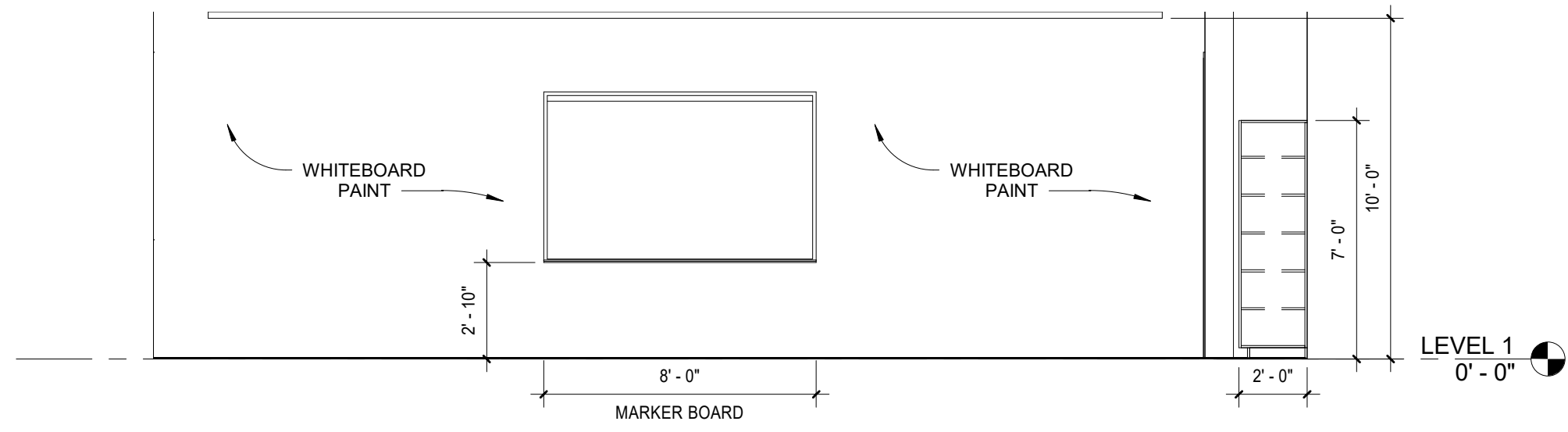
DATE ISSUED: 12/05/2016
PROJECT NO: 2016-40143
SCALE: As indicated

SHEET NUMBER: A41.1
SHEET TITLE:

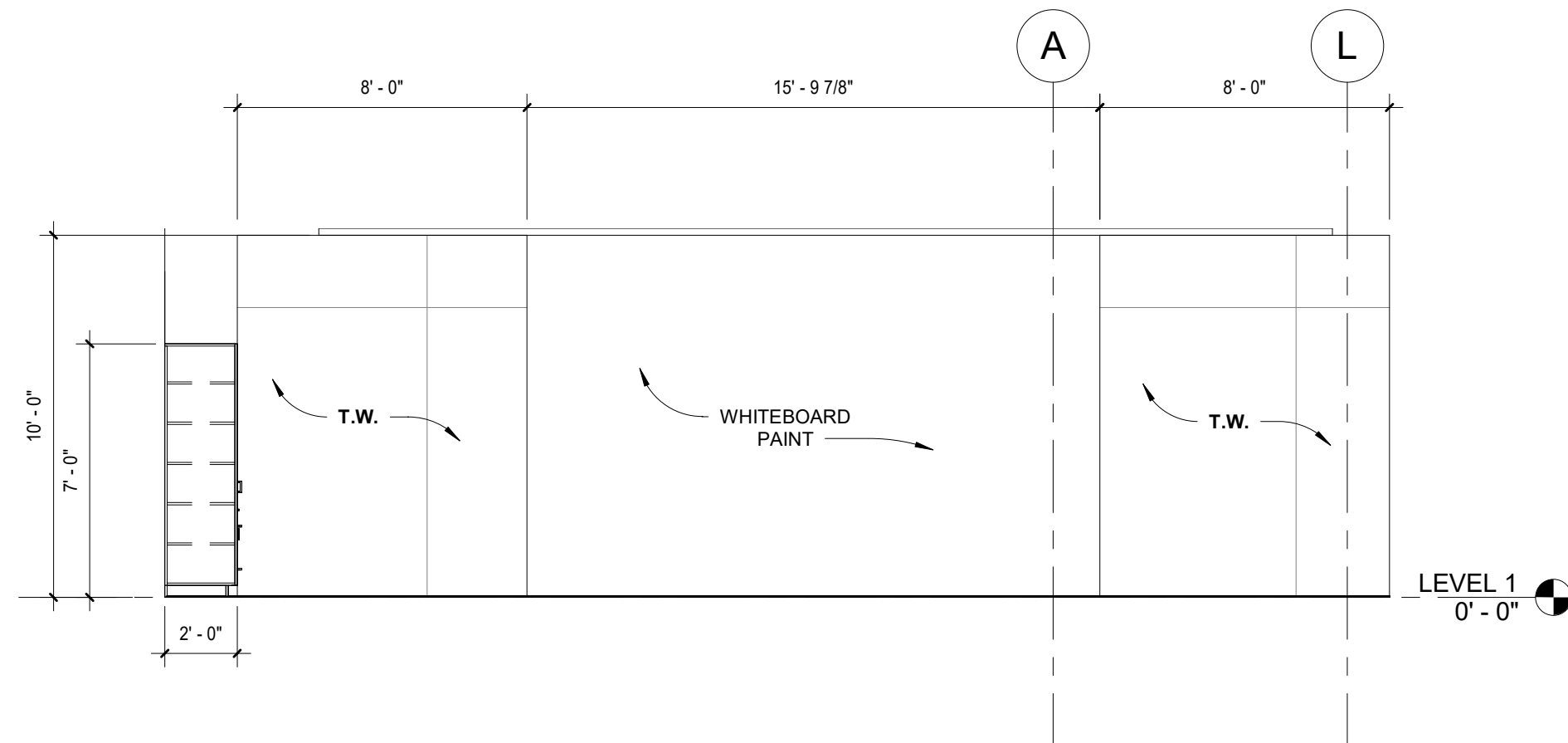
ENLARGED
CLASSROOM
PLAN-
FLEXIBLE



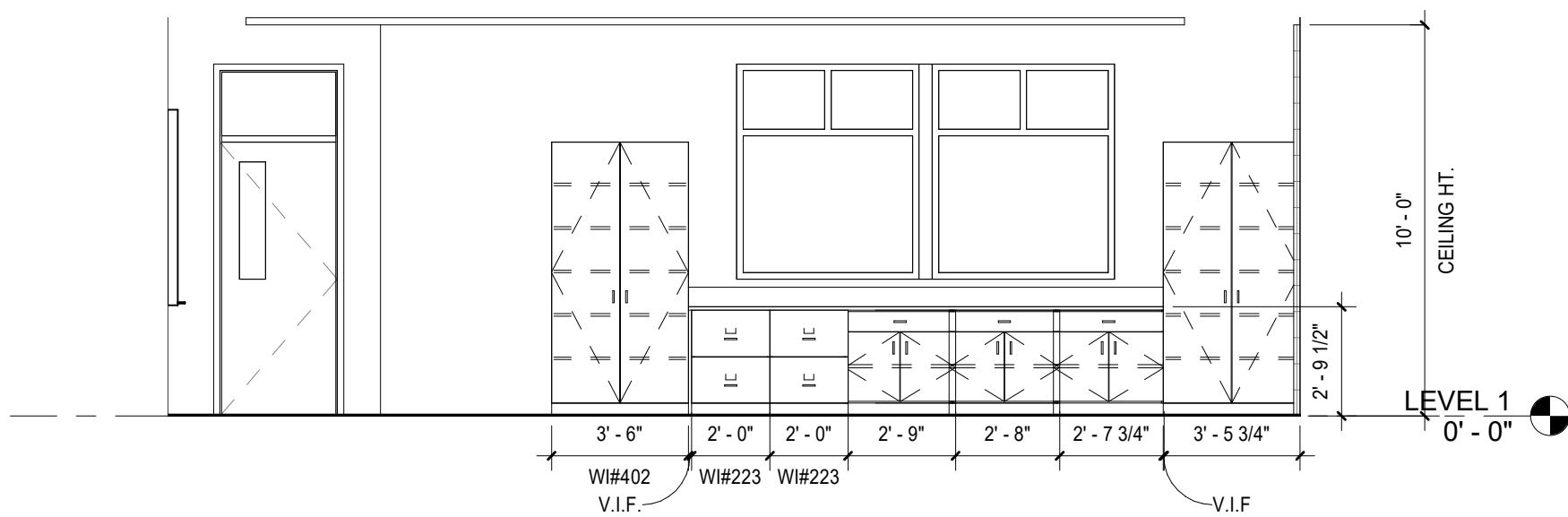
THIS DOCUMENT CONTAINS INFORMATION PROPRIETARY TO SVA ARCHITECTS INC. AND IS FURNISHED IN CONFIDENCE FOR THE LIMITED PURPOSE OF EVALUATION, BIDDING OR REVIEW. THIS DOCUMENT OR ITS CONTENTS MAY NOT BE USED FOR ANY OTHER PURPOSE AND MAY NOT BE REPRODUCED OR DISCLOSED TO OTHERS WITHOUT THE EXPRESS WRITTEN CONSENT OF SVA ARCHITECTS INC. ALL RIGHTS RESERVED. © COPYRIGHT 2016.



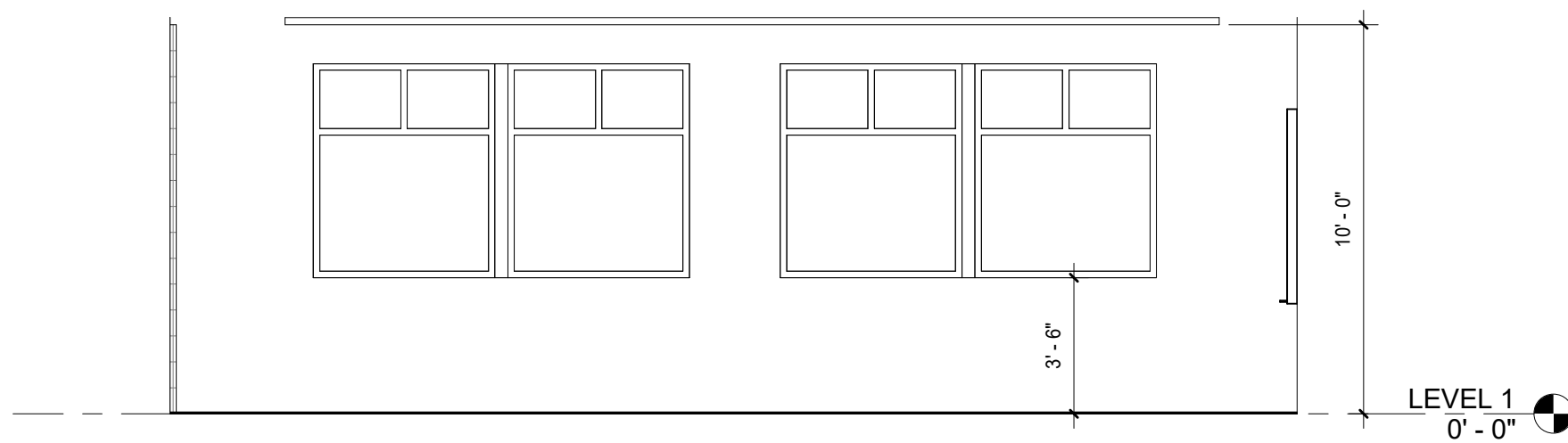
1 - a 1/4" = 1'-0" 6



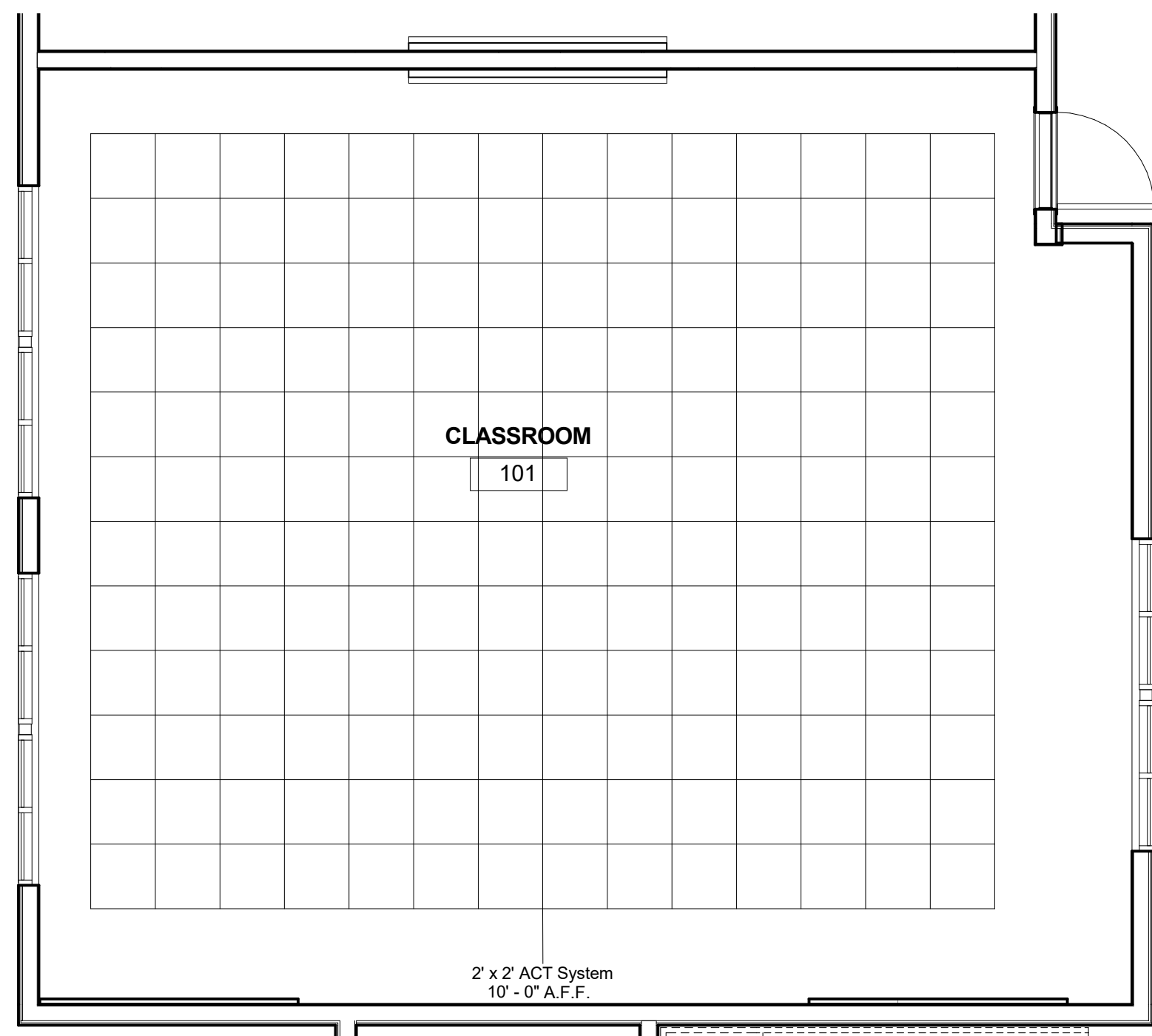
1 - c 1/4" = 1'-0" 4



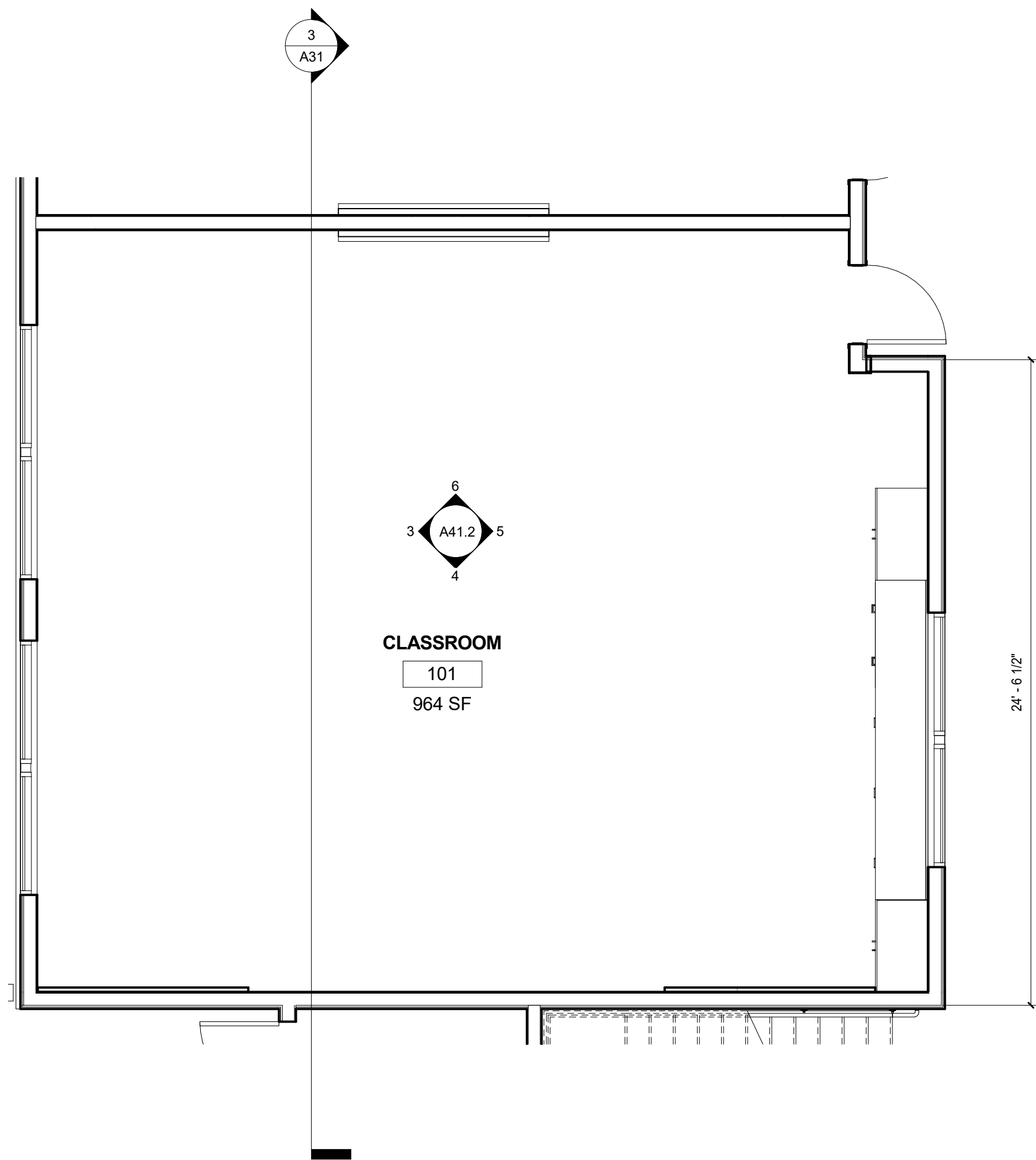
1 - b 1/4" = 1'-0" 5



1 - d 1/4" = 1'-0" 3



ENLARGED RCP- 1/4"=1'-0"- GEN CLASSROOM 1/4" = 1'-0" 2



ENLARGED PLAN- 1/4"=1'-0"- GEN 1/4" = 1'-0" 1

- RECESSED SUPPLY AIR GRILL, SEE MECH. DRAWINGS
- RECESSED RETURN AIR GRILL, SEE MECH. DRAWINGS
- RECESSED EXHAUST AIR GRILL, SEE MECH. DRAWINGS
- 2X2 LUMINAIRE, SEE ELEC. DRAWINGS*
- 2X4 LUMINAIRE, SEE ELEC. DRAWINGS*
- DECORATIVE PENDANT MOUNTED FIXTURE, SEE ELEC. DRAWINGS*
- RECESSED COMPACT FLUORESCENT DOWNLIGHT, SEE ELEC. DRAWINGS*
- WALL MOUNTED FLUORESCENT DOWNLIGHT, SEE ELEC. DRAWINGS* WALL MOUNTED TO BE 8'-0" TYP.
- WALL MOUNTED FIXTURE AT STAIR, SEE ELEC. DRAWINGS*
- WALL MOUNTED FLUORESCENT LIGHT FIXTURE, SEE ELEC. DRAWINGS*
- SURFACE MOUNTED FLUORESCENT FIXTURE, SEE ELEC. DRAWINGS*
- SUSPENDED FLUORESCENT FIXTURE, SEE ELEC. DRAWINGS*
- SUSPENDED STRIP FLUORESCENT, SEE ELEC. DRAWINGS*
- EXIT SIGNAGE, SEE ELECTRICAL DRAWINGS
- SPEAKERS, SEE ELECTRICAL DRAWINGS
- ROOF HATCH ABOVE, REFER TO DET. 8/A62.8
- GYP. BOARD CEILING, REFER TO NOTE 1
- EXTERIOR PLASTER SOFFIT, REFER TO NOTE 3
- 2' X 4' SUSPENDED CEILING TILES, REFER TO NOTE 2
- 2' X 2' SUSPENDED CEILING TILES, REFER TO NOTE 2

NOTES:
1. GYPSUM BOARD CEILINGS SHALL BE FRAMED WITH METAL STUD JOISTS, U.N.O. SEE DETAIL XXXX FOR MORE INFORMATION.
2. FOR SUSPENDED ACoustICAL CEILING, REFER TO SHEET A64.1.
3. FOR PLASTER SOFFIT DETAILS, SEE DETAIL XXXX.
4. AT ALL ROOMS WITHOUT CEILINGS (LABELLED AS "EXP" ON PLAN AND/OR ON THE FINISH SCHEDULE), ALL EXPOSED SURFACES AND ELEMENTS SHALL BE PAINTED, INCLUDING STRUCTURE, DECK ABOVE, AND ALL UTILITIES INCLUDING PIPING, CONDUITS, DUCTWORK, ETC.
5. PLUMBING, ELECTRICAL, MECHANICAL AND FIRE PROTECTION COMPONENTS ARE SHOWN FOR REFERENCE AND COORDINATION PURPOSES. REFER TO PLUMBING, ELECTRICAL, MECHANICAL AND FIRE PROTECTION DRAWINGS FOR COMPONENT AND SYSTEM QUANTITIES, TYPES AND REQUIREMENTS.
6. CENTER LIGHTING FIXTURES BETWEEN OPPOSITE WALLS, U.N.O.
7. ALL DIMENSIONS, NOTES, KEYNOTES AND DETAILS CALLOUTS ARE TYPICAL, U.N.O.
8. SEE SHEET A60.1 FOR INTERIOR FINISH LEGEND.
9. AT EXPOSED CEILINGS, ALL DUCTS, PIPES AND CONDUITS SHALL RUN PARALLEL OR PERPENDICULAR TO WALL, AND AS CLOSE TO THE DECK ABOVE AS POSSIBLE. PROVIDE ESCUTCHEONS FOR CONDUIT/PIPES AT WALLS WHERE EXPOSED.
* REFER TO ELECTRICAL DRAWINGS FOR LOCATIONS OF EMERGENCY LIGHTING.

RCP LEGEND

- EXISTING CONCRETE WALL
- EXISTING METAL STUD WALL
- NEW CONCRETE WALL PER SHEET A61.1
- NEW METAL STUD WALL PER SHEET A61.1
- 1-HR RATED WALL
- 2-HR RATED WALL
- WALL TYPE ANNOTATIONS, SEE SHEET A61.1 FOR DETAILS
- NUMBER INDICATES DOOR PER SCHEDULE, REFER TO SHEET A62.1
- NUMBER INDICATED WINDOW PER SCHEDULE, REFER TO SHEET A63.1
- F.E. FIRE EXTINGUISHER CABINET PER DET. XXXX

FLOOR PLAN GENERAL NOTES:
1. ALL DIMENSIONS ARE TO CENTERLINE OF THE GRID LINES AND/OR TO THE FACE OF STUDS, U.N.O.
2. UNLESS NOTED OTHERWISE, ALL WALLS ARE FULL HEIGHT.
3. REFER TO SHEET GEN-4 FOR TYPICAL ACCESSIBILITY REQUIREMENTS AND DIMENSIONS.
4. REFER TO ENLARGED PLANS FOR DIMENSIONS AND CALLOUTS NOT SHOWN HERE.

FLOOR PLAN LEGEND

OWNER: SOUTH PASADENA UNIFIED
SCHOOL DISTRICT
PROJECT NAME: SOUTH PASADENA MATH
(ADDITION)

CLIENT ADDRESS: 1401 Fremont Avenue, South Pasadena, CA 91030

IDENTIFICATION STAMP
DIVISION OF THE STATE ARCHITECT
OFFICE OF REGULATION SERVICES

A#
AC _____ FLS _____ SS _____
DATE _____

| REVISIONS: | | |
|------------|-------------|------|
| | DESCRIPTION | DATE |
| 1 | | |
| 2 | | |
| 3 | | |
| 4 | | |
| 5 | | |
| 6 | | |
| 7 | | |
| 8 | | |
| 9 | | |
| 10 | | |

DATE ISSUED: 12/05/2016
PROJECT NO: 2016-40143
SCALE: As indicated

SHEET NUMBER: A41.2
SHEET TITLE:

ENLARGED
CLASSROOM
PLAN-
GENERAL

SVA ARCHITECTS
3 MACARTHUR PLACE, SUITE 650 SANTA ANA, CA 92704
949.859.3380 WWW.SVA-ARCHITECTS.COM

THIS DOCUMENT CONTAINS INFORMATION PROPRIETARY TO SVA ARCHITECTS INC. AND IS FURNISHED IN CONFIDENCE FOR THE LIMITED PURPOSE OF EVALUATION, DESIGN OR REVIEW. THIS DOCUMENT OR ITS CONTENTS MAY NOT BE USED FOR ANY OTHER PURPOSE AND MAY NOT BE REPRODUCED OR DISCLOSED TO OTHERS WITHOUT THE PRIOR WRITTEN CONSENT OF SVA ARCHITECTS INC. ALL RIGHTS RESERVED. © COPYRIGHT 2014.

OWNER: SOUTH PASADENA UNIFIED
SCHOOL DISTRICT
PROJECT NAME: SOUTH PASADENA MATH
(ADDITION)
CLIENT ADDRESS: 1401 Fremont Avenue, South Pasadena, CA 91030

IDENTIFICATION STAMP
DIVISION OF THE STATE ARCHITECT
OFFICE OF REGULATION SERVICES

A#
AC FLS SS
DATE

| REVISIONS: | | |
|------------|-------------|------|
| | DESCRIPTION | DATE |
| △ | | |
| △ | | |
| △ | | |
| △ | | |
| △ | | |
| △ | | |
| △ | | |
| △ | | |
| △ | | |
| △ | | |

DATE ISSUED: 12/05/2016
PROJECT NO: 2016-40143
SCALE: 1/8" = 1'-0"

SHEET NUMBER: **A21.1**
SHEET TITLE:

BUILDING
ELEVATIONS



THIS DOCUMENT CONTAINS INFORMATION PROPRIETARY TO SVA ARCHITECTS INC. AND IS FURNISHED IN CONFIDENCE FOR THE LIMITED PURPOSE OF EVALUATION, BIDDING OR REVIEW. THIS DOCUMENT OR ITS CONTENTS MAY NOT BE USED FOR ANY OTHER PURPOSE AND MAY NOT BE REPRODUCED OR DISCLOSED TO OTHERS WITHOUT THE WRITTEN CONSENT OF SVA ARCHITECTS INC. ALL RIGHTS RESERVED. © COPYRIGHT 2014.



EAST ELEVATION 1/8" = 1'-0" 2



WEST ELEVATION 1/8" = 1'-0" 1